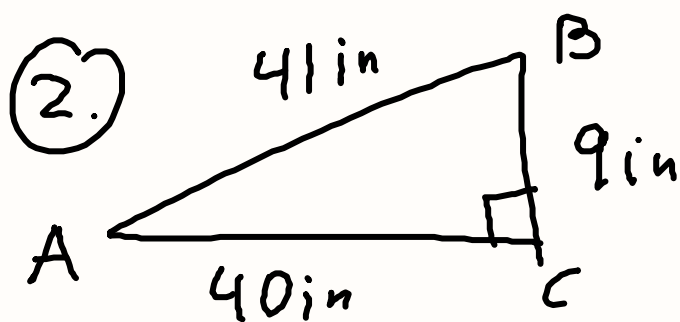


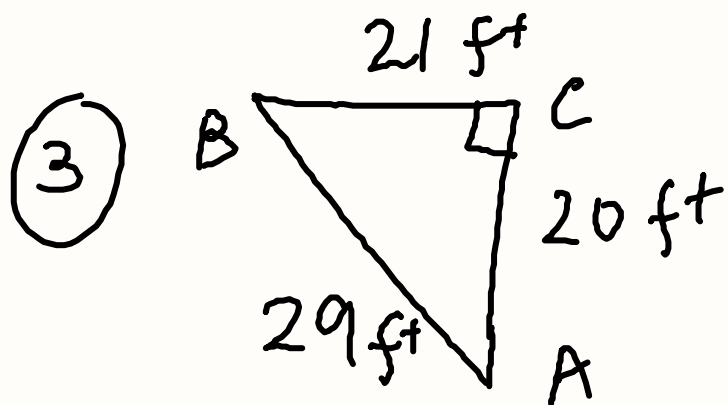
① $\sin 39^\circ = 0.6293$



$$\cos A = \frac{40}{41}$$

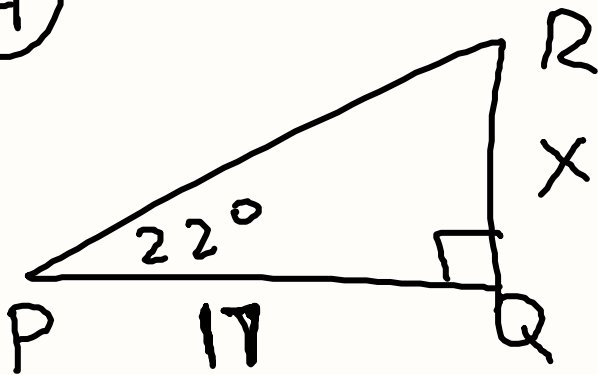
$$\sin B = \frac{20}{29}$$

$$\cos B = \frac{21}{29}$$



$$\tan B = \frac{20}{21}$$

④

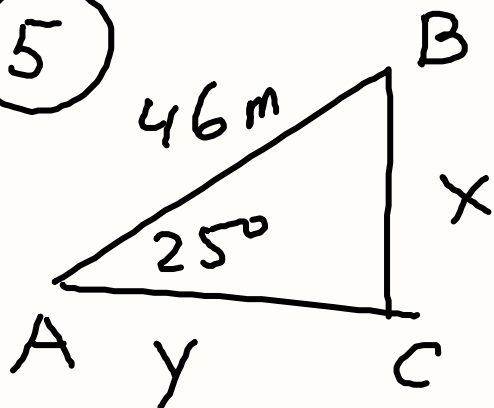


$$\tan 22 = \frac{x}{17}$$

$$0.404 = \frac{x}{17}$$

$$x = 0.404 \cdot 17 = 6.868\text{m}$$

⑤



$$\sin 25^\circ = \frac{x}{46}$$

$$0.423 = \frac{x}{46}$$

$$x = 46 \cdot 0.423 \approx 19$$

$$\cos 25^\circ = \frac{y}{46}$$

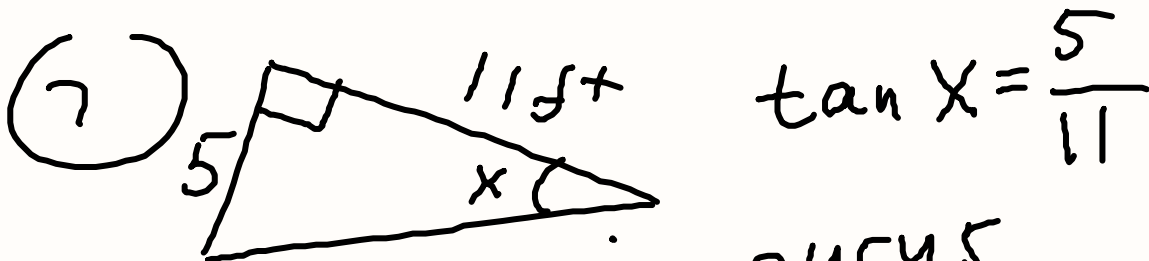
$$0.906 = \frac{y}{46}$$

$$y = 46 \cdot 0.906 = 42$$

$$P = 46 + 19 + 42 = \underline{107m}$$

$$(6) \cos = 0.6428$$

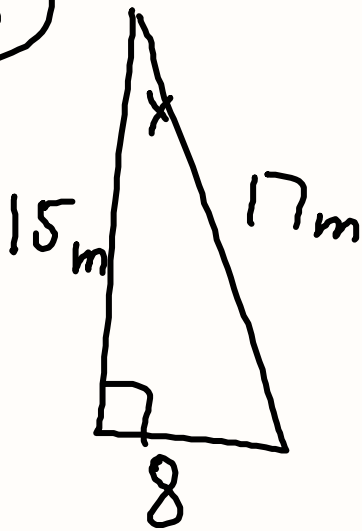
$$\boxed{\cos^{-1}} \quad 0.6428 = \underline{50^\circ}$$



$$5 \div 11 = 0.4545$$

$$\boxed{\tan^{-1}} \quad 0.4545 = \underline{24^\circ}$$

(8)



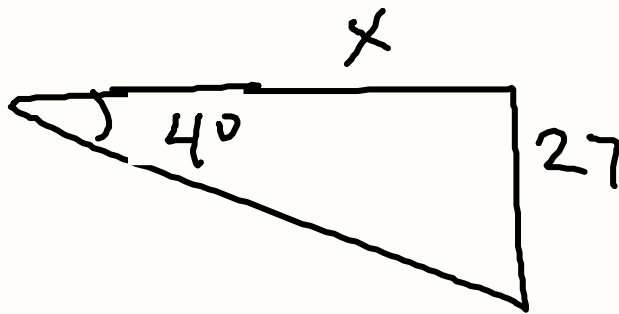
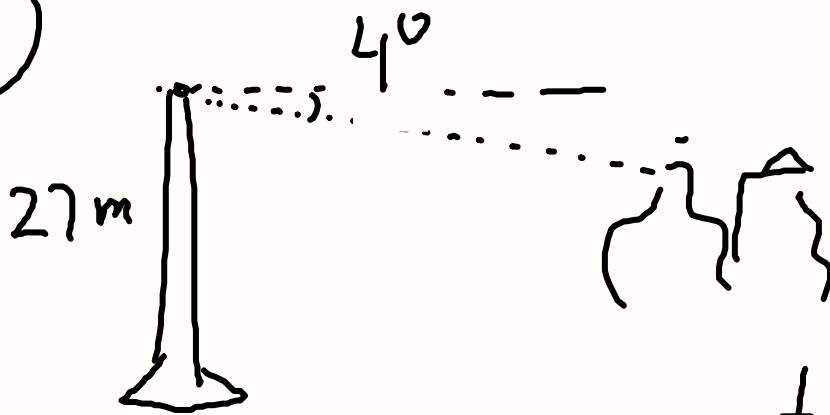
$$\sin X = \frac{8}{17} \approx 0.47$$

$$\boxed{\sin^{-1} X} \quad 0.47 = 28^\circ$$

$$\tan X = \frac{8}{15} = 0.53$$

$$\tan^{-1} = 28^\circ$$

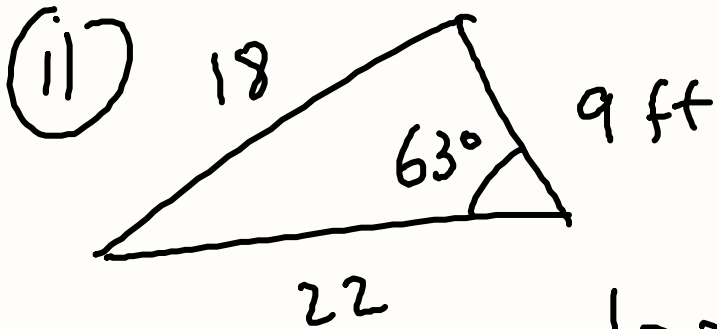
(a)



$$\tan 4^\circ = \frac{27}{x}$$

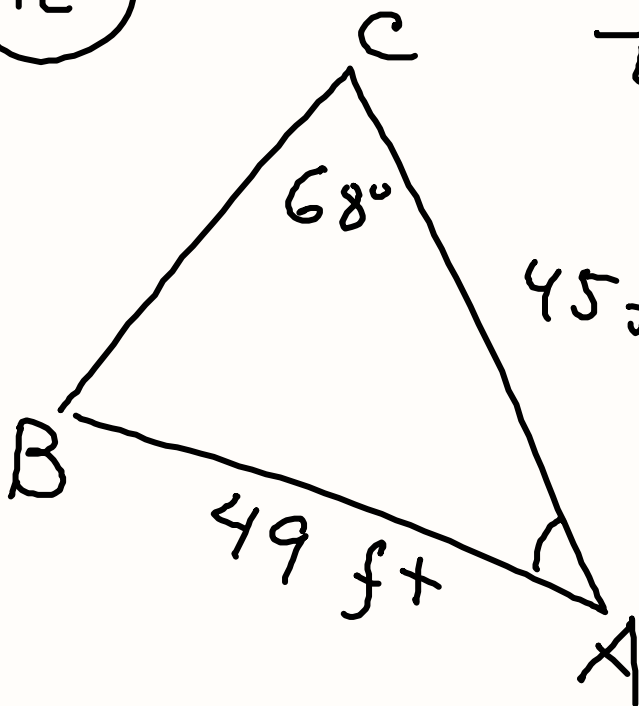
$$0.07 = \frac{27}{x}$$

$$x = \frac{27}{0.07} \approx 386 \text{ m}$$



$$\begin{aligned} A &= \frac{1}{2} \cdot 22 \cdot 9 \cdot \sin 63^\circ = \\ &= 0.5 \cdot 22 \cdot 9 \cdot 0.89 = \\ &= 88 \text{ m}^2 \end{aligned}$$

(12)



$$\frac{\sin C}{49} = \frac{\sin B}{45}$$

$$45 \times \frac{\sin 68}{49} = \sin B$$

$$0.927 \cdot 45 = 49 \cdot \sin B$$

$$\frac{42}{49} = \frac{49 \sin B}{49}$$

$$0.857 = \sin B$$
$$\sin^{-1} 0.857 \approx 60^\circ$$

$$A = 180^\circ - (60^\circ + 68^\circ) = 52^\circ$$